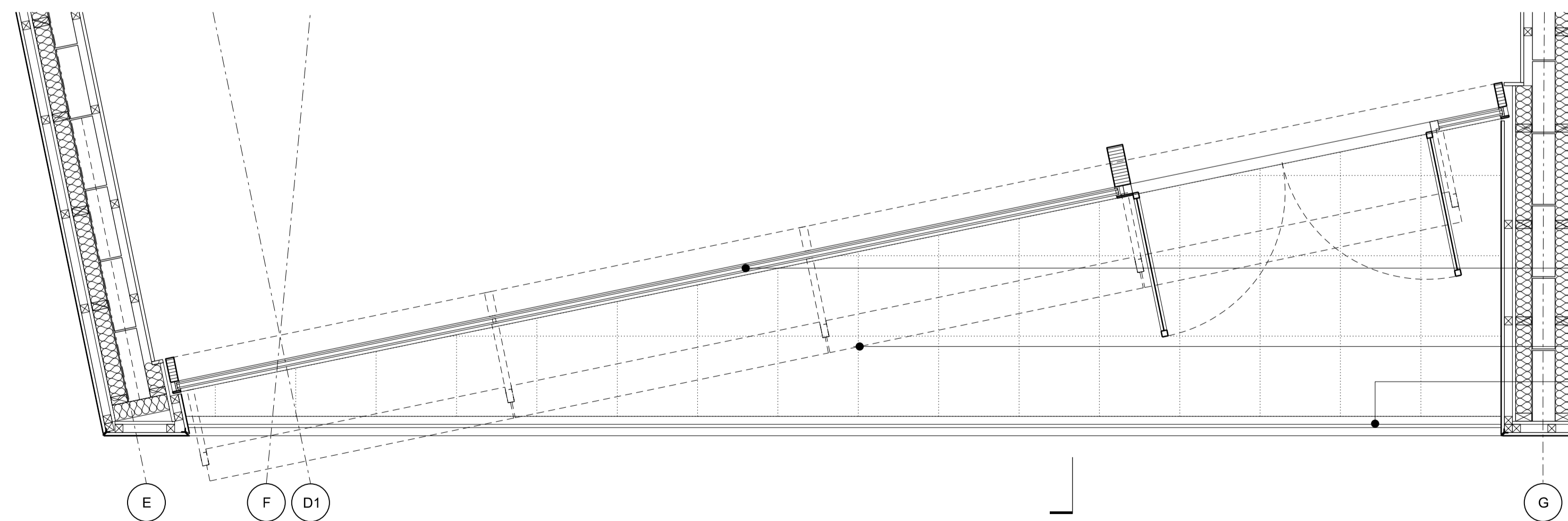
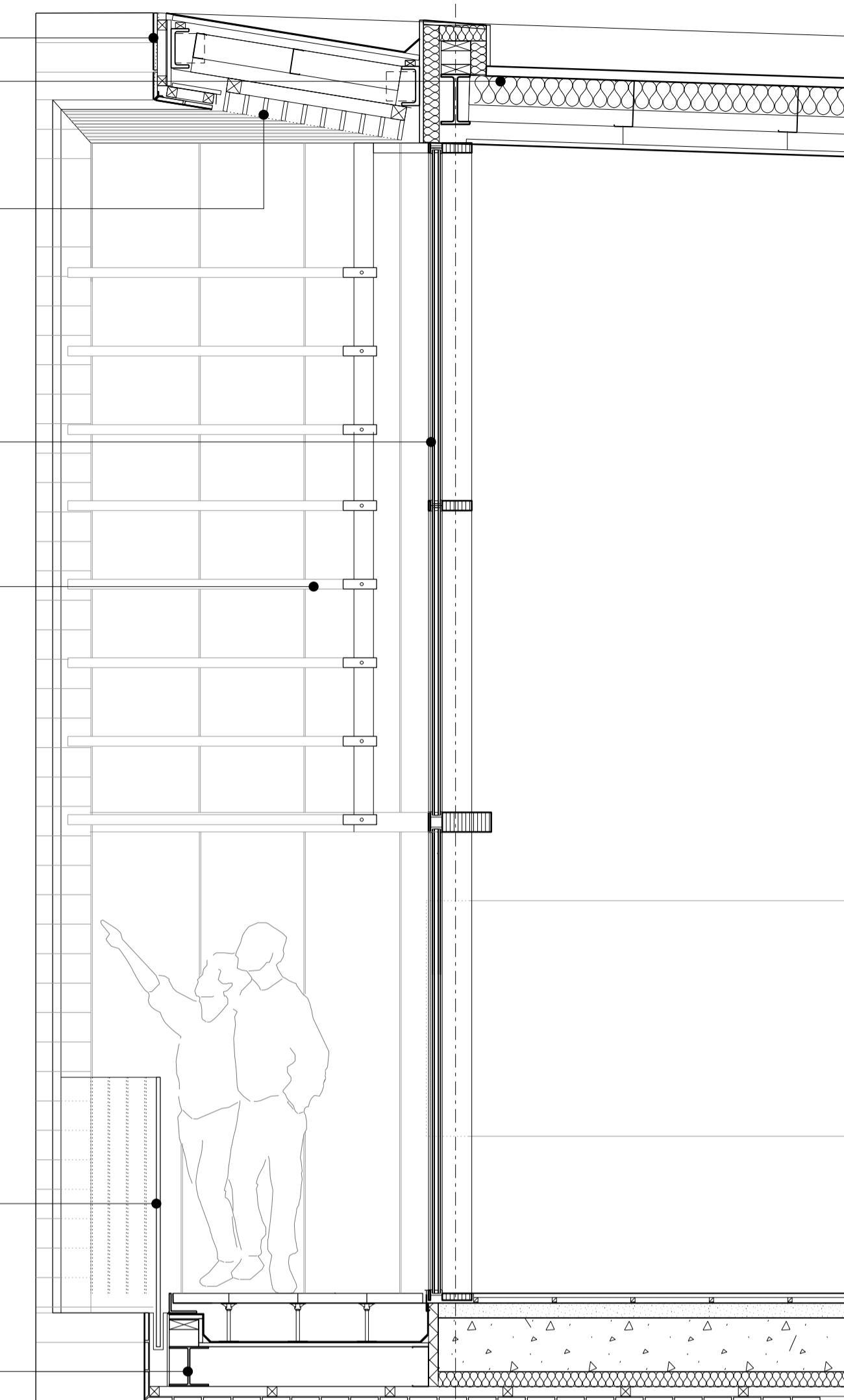


- HORIZONTAL TIMBER SLAT  
RAINSCREEN CLADDING
- ROOF INSULATION
- TIMBER SLATS TO SOFFIT
- DOUBLE GLAZED SYSTEM
- FIXED TIMBER LOUVRES
- GLAZED BALUSTRADE
- STEEL STRUCTURE TO TERRACE



- HORIZONTAL TIMBER SLAT  
RAINSCREEN CLADDING
- DOUBLE GLAZED SYSTEM
- FIXED TIMBER LOUVRES
- GLAZED BALUSTRADE

Issue	Date	Description	By	Chkd
P1	28.07.2010	Draft Planning Submission	VP	JL
P2	04.06.2010	Planning Submission	VP	JL

Do not Scale. Use figured dimensions only. All dimensions to be checked on site

All drawings to be read in conjunction with the Engineers' drawings. Any discrepancies between consultants drawings to be reported to the Architect before any work commences.

The Contractor's attention is drawn to the Health & Safety matters identified in the Health & Safety plan as being potentially hazardous.

These items should not be considered as a complete and final list. The Work Package Contractor's normal Health and Safety obligations still apply when undertaking constructional operations both on and off site.

Planning

24 Britton Street  
London  
EC1M 5UA

+44 (0) 20 7608 7900 T  
+44 (0) 20 7608 7901 F  
www.wilkinsonseye.com

Project: Worthing Aquarena

Title: Detail Sections  
Facade Detail South Facade 2

Scale @A1: 1:25

Drawing and CAD File Number: 0511-P-4005

Issue: P2