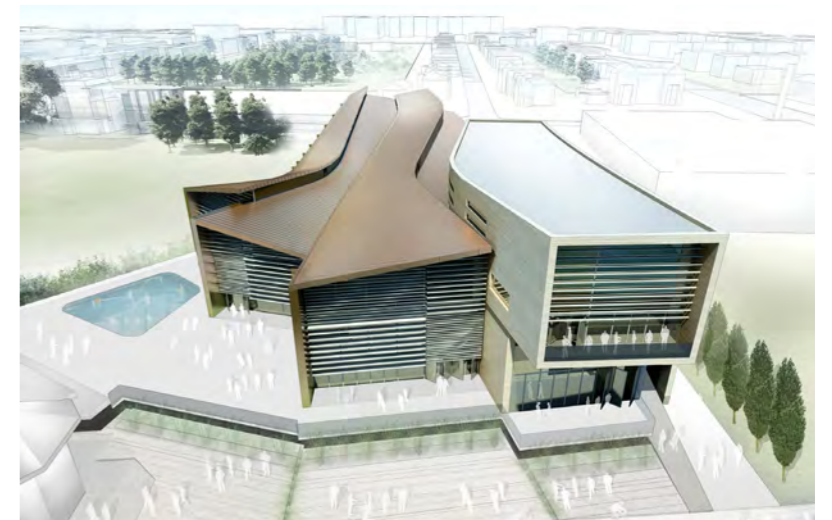




WilkinsonEyre.Architects



## Worthing New pools

Planning Supplement  
September 2010

**Worthing New Pools**

## Worthing New Pools

Report Title: Planning Supplement

Job Name: Worthing New Pools

Reason For Issue: Additional Planning Information

Prepared by: Jeff Lee  
Senior Architect

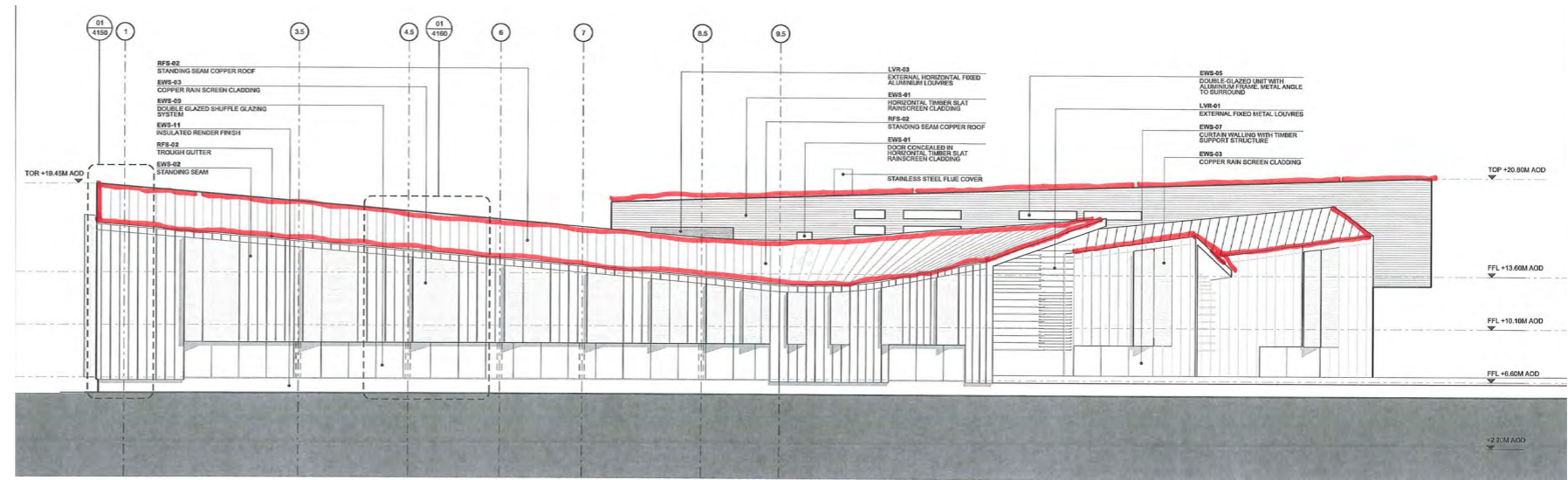
Approved by: Sebastien Ricard  
Associate Director

Rev No	Comments	Date
00	Planning Supplement	29/09/10

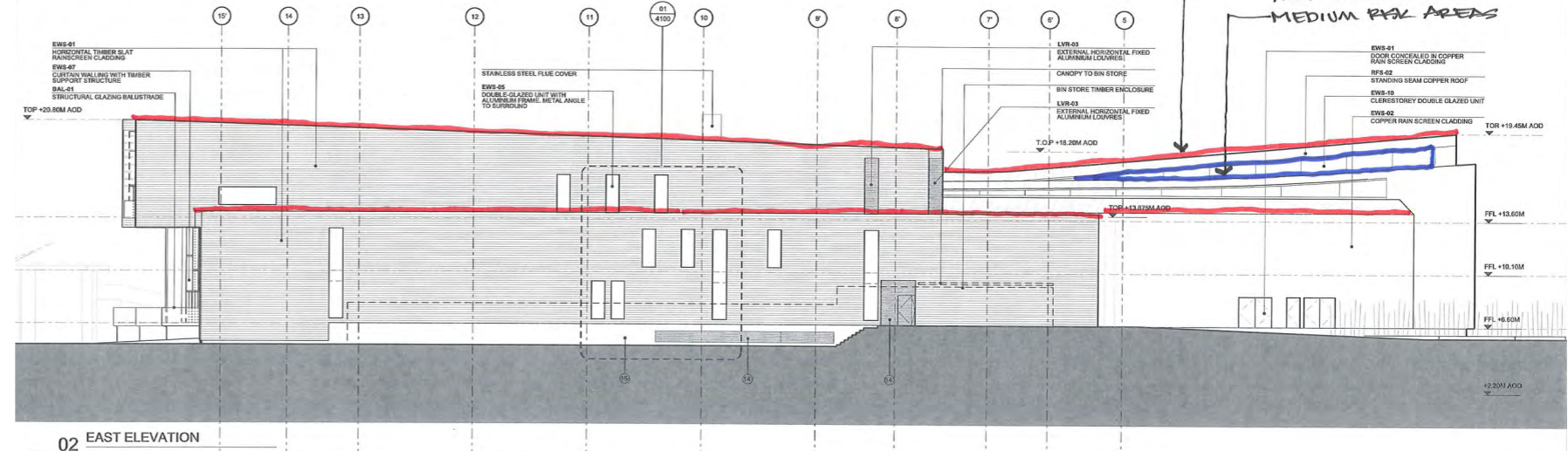
Job No: 00511.00

File Reference: R19

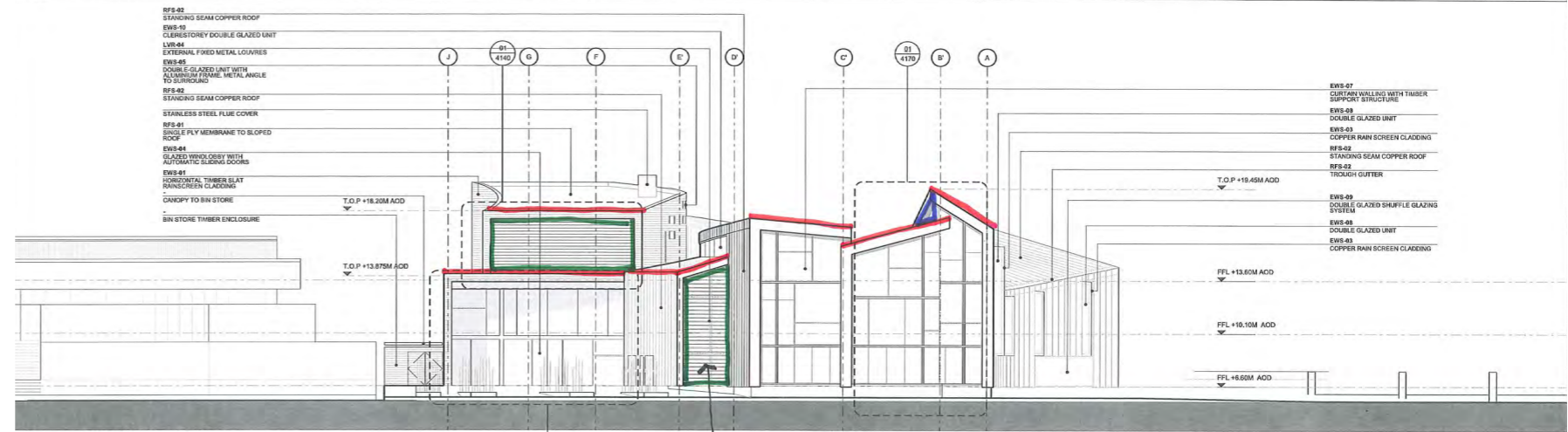
Date created: 29.09.2010



01 WEST ELEVATION

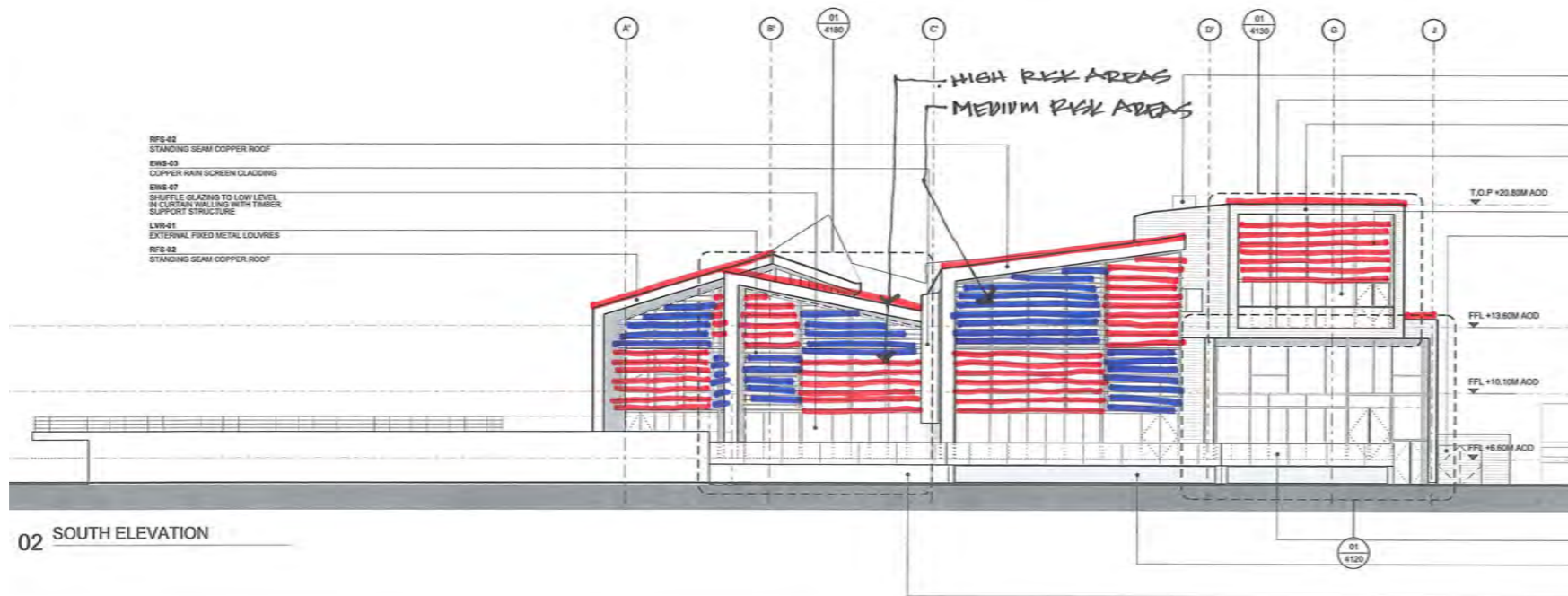
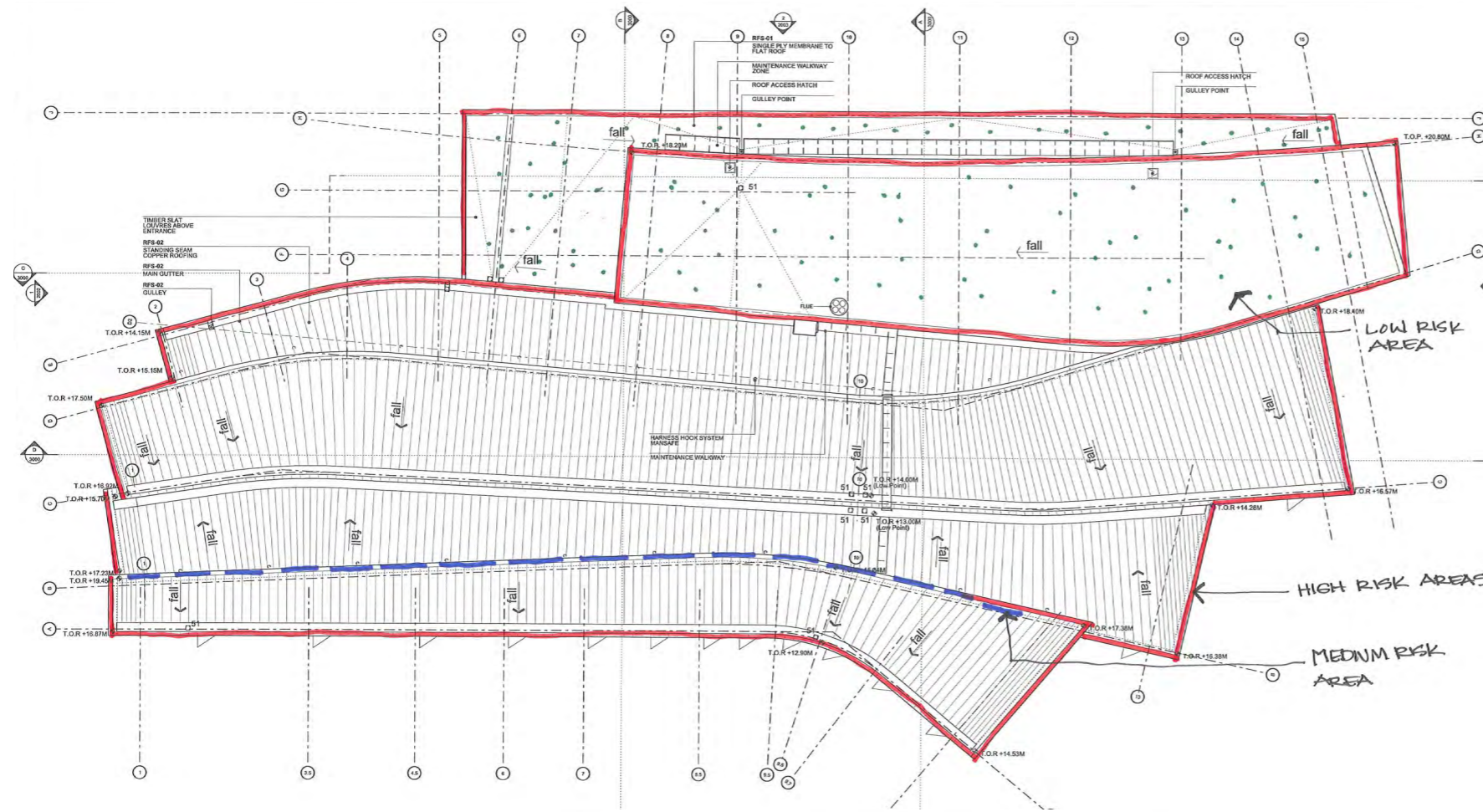


02 EAST ELEVATION



01 NORTH ELEVATION

Low Risk



02 SOUTH ELEVATION

**Pest Control**

Pest infestation is likely to occur from seagulls seeking shelter along the seafront. There are three main areas of risk which need to be addressed high, medium and low risk. High risk areas are the parapet edges and external louvres along the south facades. Medium risk areas are the high level clerestory lights where some shelter is provided. Low risk areas are roof surfaces inside the building line where birds could potentially relocate. We propose to deal with each of the risk areas in a different way.

Publicly visible high risk areas of visual importance such as the louvres and roof parapet edges will be resolved with either a proprietary bird deterrent system such as the 'Avishock' system or a post and wire solution is proposed to deter birds. Louvres spaced 200mm or more will be treated immediately, and louvres spaced less than 200mm will be monitored for potential retrofit. Parapet edges will be dealt with High risk areas not visible from the public will be dealt with using traditional spike deterrent systems.

Medium risk areas at the high level glazing will can be dealt with netting where it will not be visible from within the building or from the exterior.

It is anticipated that low risk areas will not require immediate protection, but will be monitored if additional protection is required.