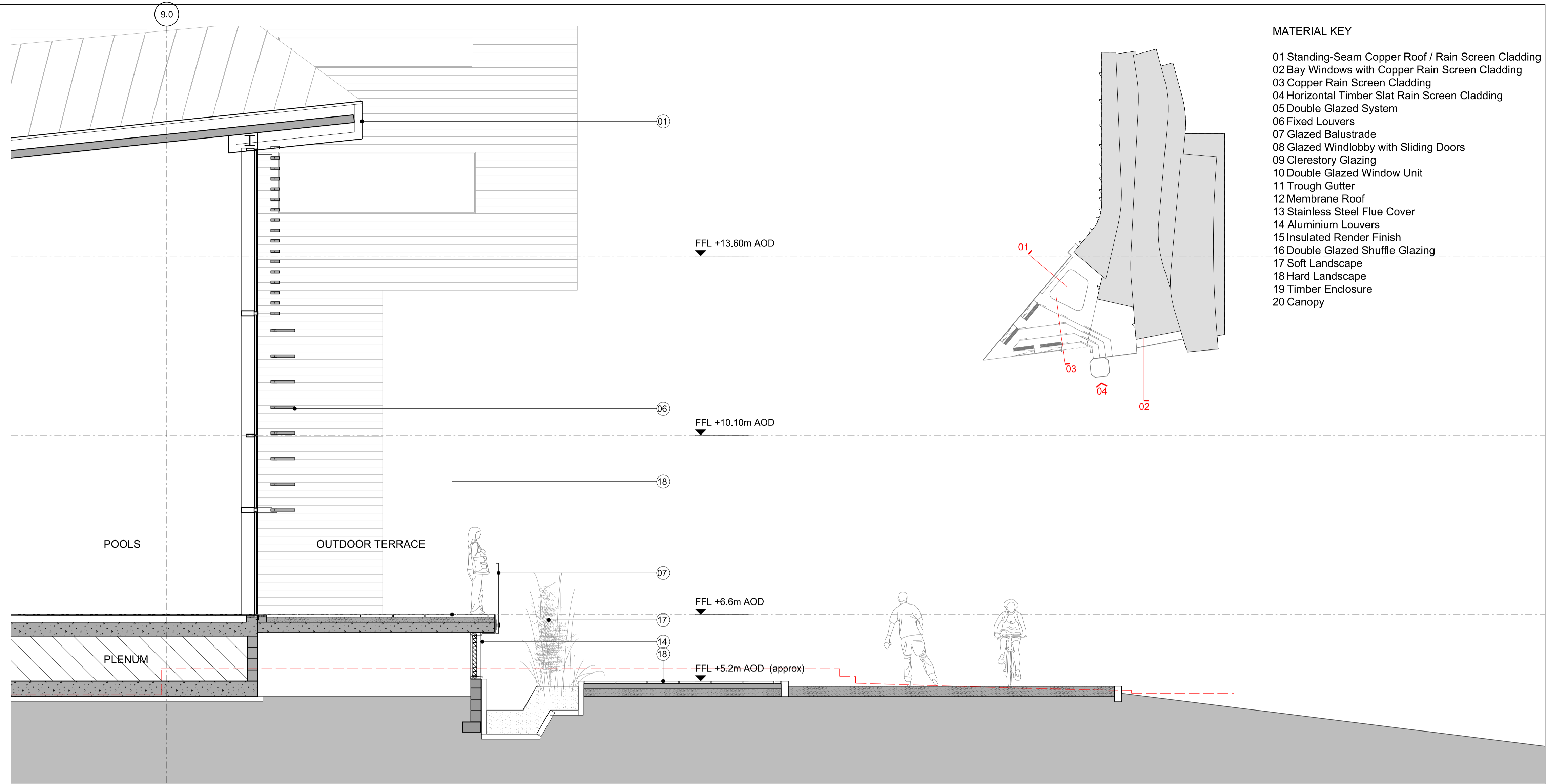
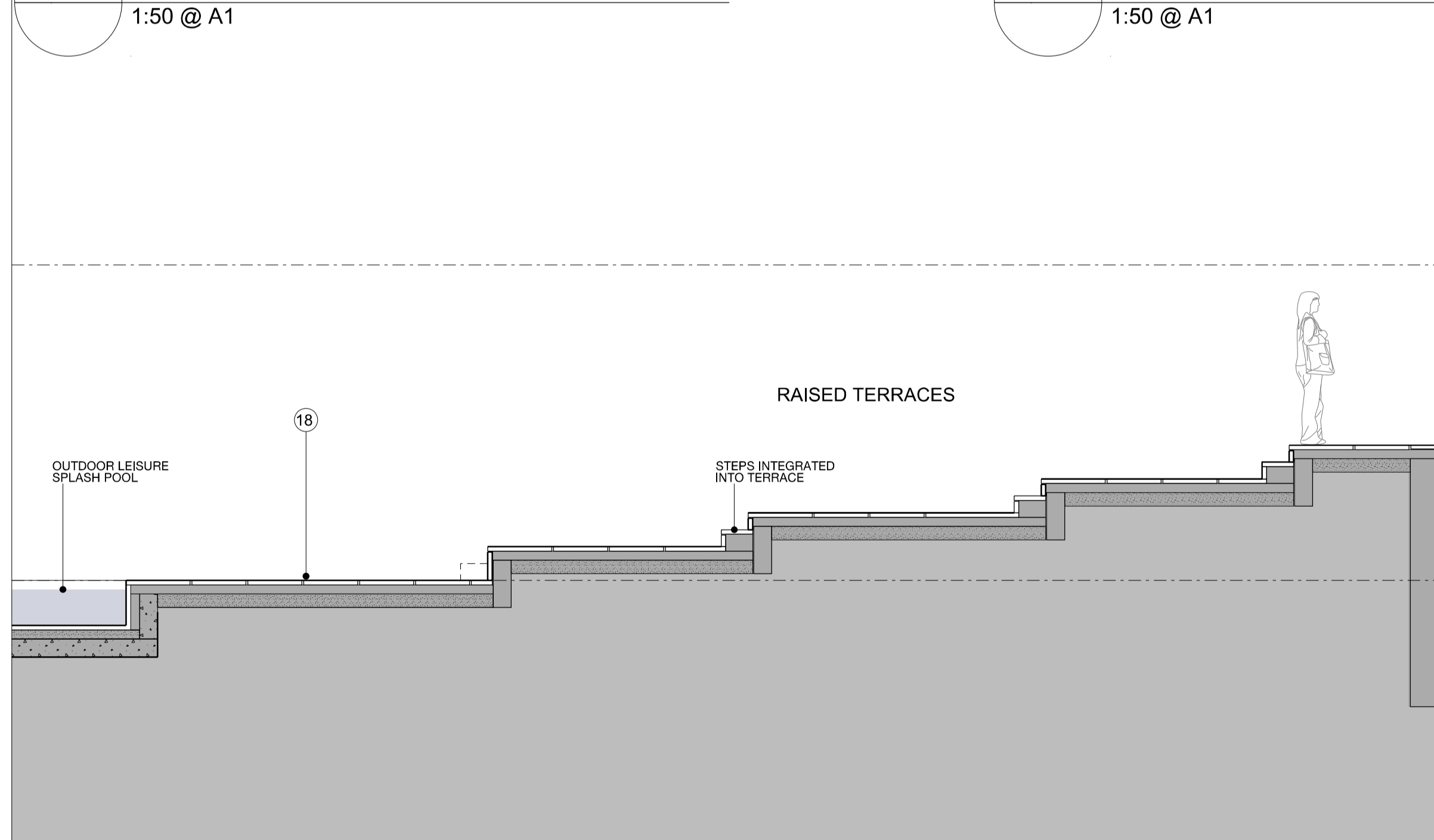


**01** DETAIL SECTION THROUGH SOUTH TERRACE TO PARK  
1:50 @ A1

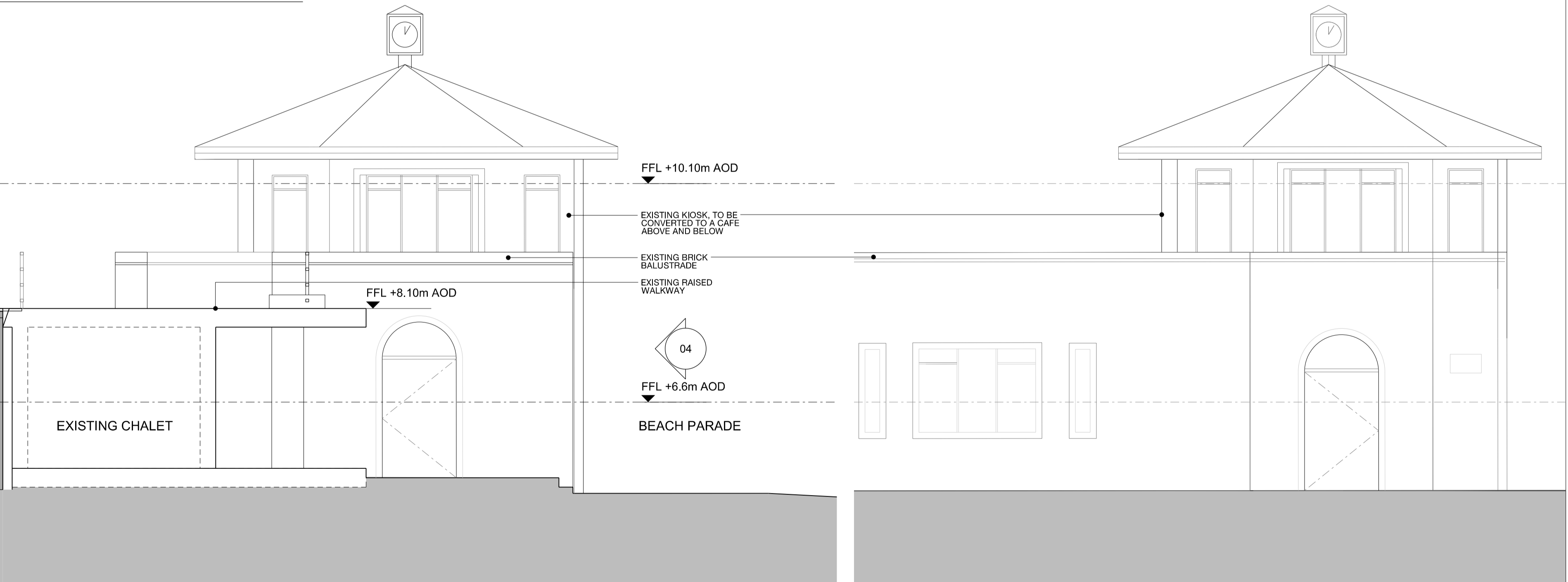


**02** DETAIL SECTION THROUGH SOUTH TERRACE TO BEACH PARADE  
1:50 @ A1

- MATERIAL KEY**
- 01 Standing-Seam Copper Roof / Rain Screen Cladding
  - 02 Bay Windows with Copper Rain Screen Cladding
  - 03 Copper Rain Screen Cladding
  - 04 Horizontal Timber Slat Rain Screen Cladding
  - 05 Double Glazed System
  - 06 Fixed Louvers
  - 07 Glazed Balustrade
  - 08 Glazed Windlobby with Sliding Doors
  - 09 Clerestory Glazing
  - 10 Double Glazed Window Unit
  - 11 Trough Gutter
  - 12 Membrane Roof
  - 13 Stainless Steel Flue Cover
  - 14 Aluminium Louvers
  - 15 Insulated Render Finish
  - 16 Double Glazed Shuffle Glazing
  - 17 Soft Landscape
  - 18 Hard Landscape
  - 19 Timber Enclosure
  - 20 Canopy



**03** DETAIL SECTION OF RAISED TERRACES  
1:50 @ A1



**04** SOUTH ELEVATION OF KIOSK  
1:50 @ A1

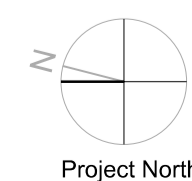
Issue	Date	Description	By	Chkd
P1	28.05.2010	Draft: Planning Submission	VP	JL
P2	04.06.2010	Planning Submission	VP	JL

Do not Scale. Use figured dimensions only. All dimensions to be checked on site

All drawings to be read in conjunction with the Engineers' drawings. Any discrepancies between consultants drawings to be reported to the Architect before any work commences.

The Contractor's attention is drawn to the Health & Safety matters identified in the Health & Safety plan as being potentially hazardous.

These items should not be considered as a complete and final list. The Work Package Contractor's normal Health and Safety obligations still apply when undertaking constructional operations both on and off site.



**Planning**

24 Britton Street  
London  
EC1M 5UA

+44 (0) 20 7608 7900 T  
+44 (0) 20 7608 7901 F  
www.wilkinsonseyre.com

**WilkinsonEyre.Architects**

Project: **Worthing Aquarena**

Title: **Detail Sections Landscaping Details**

Scale @A1: **1:50** Drawing and CAD File Number: **0511-P-6011** Issue: **P2**

© WilkinsonEyre.Architects Ltd