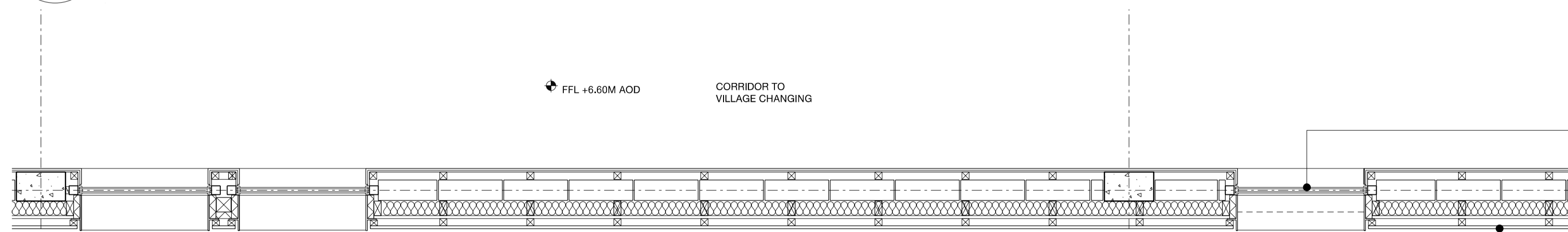
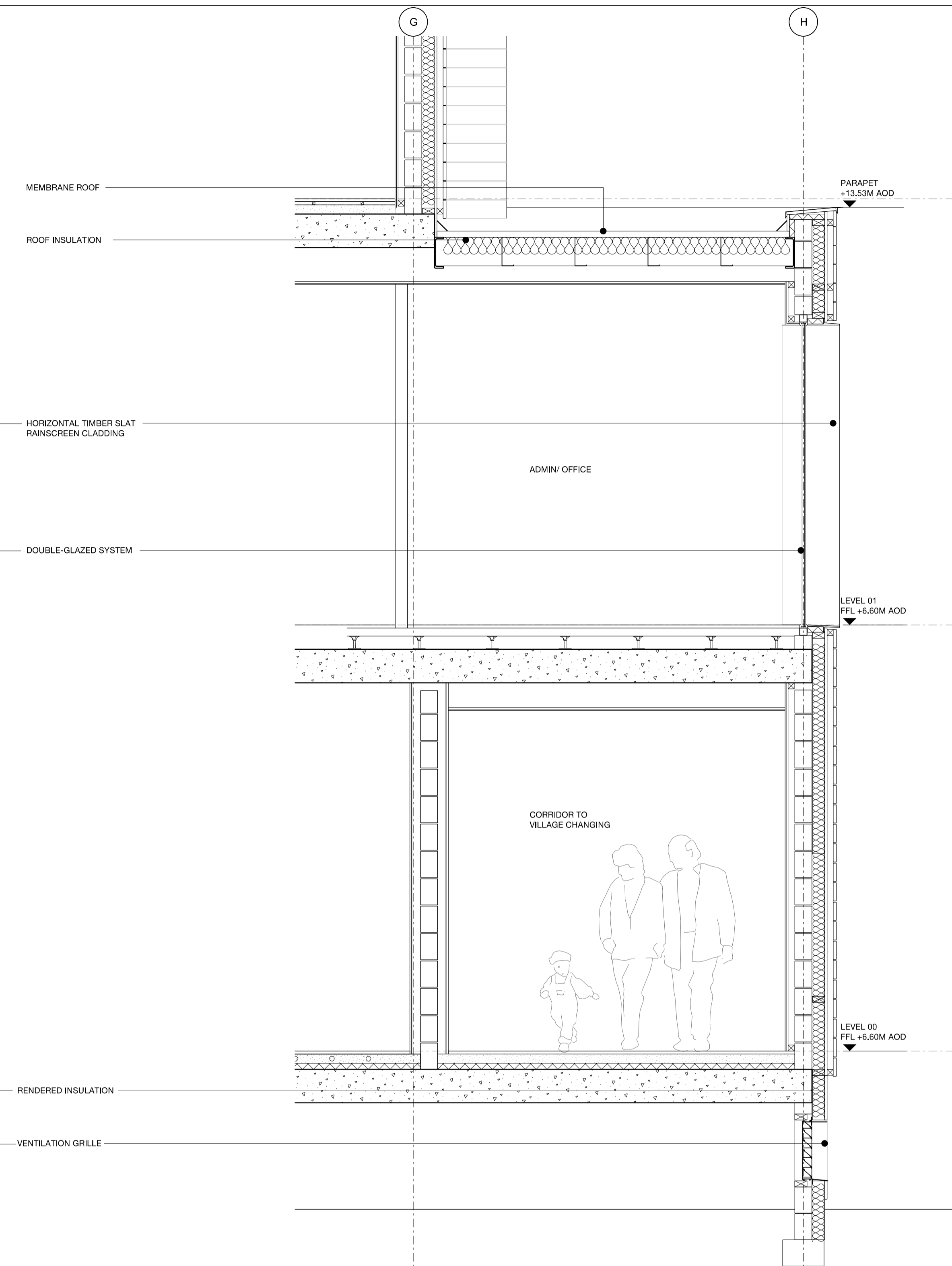


01 DETAIL ELEVATION OF EAST FACADE
1:25 @ A1



02 DETAIL PLAN OF EAST FACADE
1:25 @ A1



03 DETAIL SECTION OF EAST FACADE
1:25 @ A1

Issue	Date	Description	By	Chkd
P1	28.05.2010	Draft Planning Submission	VP	JL
P2	04.06.2010	Planning Submission	VP	JL

Do not Scale. Use figured dimensions only. All dimensions to be checked on site

All drawings to be read in conjunction with the Engineers' drawings. Any discrepancies between consultants drawings to be reported to the Architect before any work commences.

The Contractor's attention is drawn to the Health & Safety matters identified in the Health & Safety plan as being potentially hazardous.

These items should not be considered as a complete and final list. The Work Package Contractor's normal Health and Safety obligations still apply when undertaking constructional operations both on and off site.

Planning

24 Britton Street
London
EC1M 5UA

+44 (0) 20 7608 7900 T
+44 (0) 20 7608 7901 F
www.wilkinsonseye.com

Project: Worthing Aquarena

Title: Detail Sections
Facade Detail East Facade

Scale @A1: 1:25

Drawing and CAD File Number: 0511-P-4006

Issue: P2

© WilkinsonEyre.Architects Ltd